

LIGHT TUNNELS





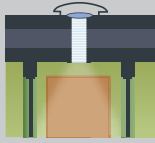

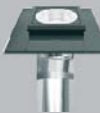

A source of natural light should be available in any living space. Unfortunately, there are interiors in which the use of vertical or roof windows is not feasible. Rooms devoid of daylight are dark and uncomfortable. To ensure illumination in such places, installing a light tunnel will channel natural light to the centre. Light tunnels can constitute the main or additional light source in any room.

The light tunnel carries daylight via the light transmitting tube. Sunlight is reflected from the walls of the highly reflective tube and is directed downwards to the diffuser.

The diffuser which is fitted in the ceiling evenly distributes natural light, illuminating the room.

The amount of light entering the room is dependent on the location of the dome. When planning the installation of the light tunnel, the following elements should be taken into account:

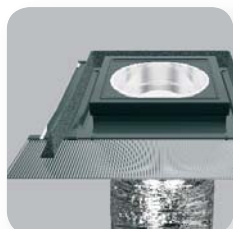
- Place the dome on a south facing roof which is the most illuminated part of the roof and avoid shady places.
- Locate the light transmitting tube in such a way that it travels the shortest possible distance between roof and ceiling.
- Install the light tunnel to ensure the best possible tension (light tunnel with flexible tube).

LIGHT TUNNELS				FLAT ROOF PRODUCTS	
LIGHT TUNNELS WITH FLEXIBLE LIGHT TRANSMITTING TUBE		LIGHT TUNNELS WITH RIGID LIGHT TRANSMITTING TUBE		LIGHT TUNNEL WITH FLEXIBLE LIGHT TRANSMITTING TUBE	LIGHT TUNNEL WITH RIGID LIGHT TRANSMITTING TUBE
					
SF flat	SF -L flat with illumination function	SR flat	SR -L flat with illumination function	SFF	SRF
with a dome made of durable polycarbonate					
					
<ul style="list-style-type: none"> • The light tunnel provides natural light to all rooms in the building. • The flexible light transmitting tube is ideal for installation in rooms with structural obstacles that have to be bypassed (reducing installation time). 		<ul style="list-style-type: none"> • The light tunnel provides natural light to all rooms in the building. • Reflective layer (using pure silver) applied in the production of elements of the light transmitting tube is characterized by light reflective factors of 98%. 		<ul style="list-style-type: none"> • Illumination with natural light for all rooms under flat roofs. • Suitable for pitches from 0-15°. 	



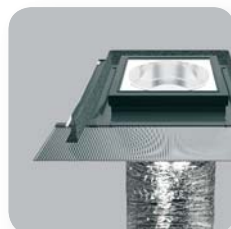
▶ LIGHT TUNNELS WITH FLEXIBLE TUBE

- The light tunnel enables illumination of all rooms in the building, even those which cannot be fitted with roof windows or vertical windows.
- Using light tunnels in rooms devoid of daylight lets natural light inside for better illumination. In other rooms, the light tunnel can constitute an additional light source, enhancing the user's comfort and saving energy.
- It carries daylight via the light transmitting tube. Sunlight is reflected from the walls of the flexible, reflective tube and is directed downwards to the diffuser. The diffuser which is fitted in the ceiling evenly distributes natural light, illuminating the room.
- Suitable for pitches from 15° – 60° and flat roofs.



SF_

- Flat.
- Equipped with integrated flashing. Three types of flashings are available: for flat, corrugated and high profile roof coverings.



SF_-L

- Flat - version which illuminates with the space directly below the installation of light tunnel's outer element e.g. attic or loft.
- Equipped with integrated flashing. Three types of flashings are available: for flat, corrugated and high profile roof coverings.

LIGHT TUNNELS SF_

light tunnel diameter [cm]	35	55
tube length [cm]	210	210
SFS for flat roof coverings	£280	£388
SFZ for corrugated roof coverings	£280	£388
SFH for high profile roof coverings	£280	£388
SFL for slate roof coverings	£280	£388

LIGHT TUNNELS SF_-L

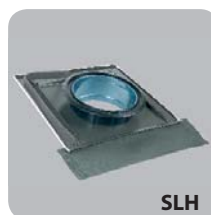
light tunnel diameter [cm]	35	55
tube length [cm]	210	210
SFS-L for flat roof coverings	£294	£406
SFZ-L for corrugated roof coverings	£294	£406
SFH-L for high profile roof coverings	£294	£406
SFL-L for slate roof coverings	£294	£406



SLS



SLZ



SLH



SLL

ACCESSORIES FOR LIGHT TUNNELS

light tunnel diameter [cm]	35	55
SLM 90 Flexible light transmitting tube extension kit, standard length 90cm	£75	£87
SLC Hanger	£60	£72
SLO Light Kit	£48	£50



SLM



SLC



SLO

▶ LIGHT TUNNELS WITH RIGID TUBE

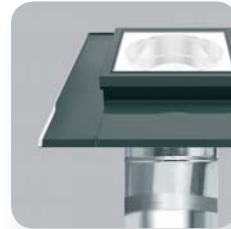


- They can be used in any room, but due to minimum light loss they are recommended for special buildings in which natural light must be transmitted over long distances (e.g 12m).
- They come with a rigid light transmitting tube which is made of aluminum and covered with a reflective silver layer reflecting 98% of light (the interior of the tube looks like a mirror).
- This design lets much more natural light into the room.
- The light tunnels consists of collecting light, a flashing rigid light transmitting tube, elbow, diffuser and ceiling frame.
- Suitable for pitches from 15° – 60° and flat roofs.



SR_

- Flat.
- Equipped with integrated flashing. Three types of flashings are available: for flat, corrugated and high profile roof coverings.



SR_-L

- Flat - version which illuminates with natural light the space directly below the installation of light tunnel's outer element e.g. attic or loft.
- Equipped with integrated flashing. Three types of flashings are available: for flat, corrugated and high profile roof coverings.

LIGHT TUNNELS SR_

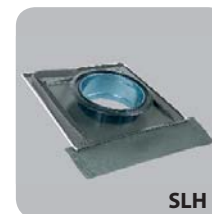
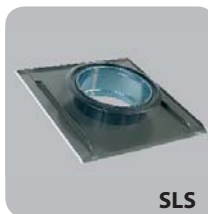
light tunnel diameter [cm]	25	35	55
tube length [cm]	210	210	180*
SRS for flat roof coverings	£300	£402	£592
SRZ for corrugated roof coverings	£300	£402	£592
SRH for high profile roof coverings	£300	£402	£592
SRL for slate roof coverings	£300	£402	£592

LIGHT TUNNELS SR_-L

light tunnel diameter [cm]	25	35	55
tube length [cm]	210	210	180*
SRS-L for flat roof coverings	£316	£418	£620
SRZ-L for corrugated roof coverings	£316	£418	£620
SRH-L for high profile roof coverings	£316	£418	£620
SRL-L for slate roof coverings	£316	£418	£620

FLASHINGS FOR SRT/SLT LIGHT TUNNELS

light tunnel diameter [cm]	25	35	55
SLS for flat roof coverings	£89	£116	£144
SLZ for corrugated roof coverings	£104	£132	£174
SLH for high profile roof coverings	£114	£142	£190
SLL for slate roof coverings	£88	£120	£150

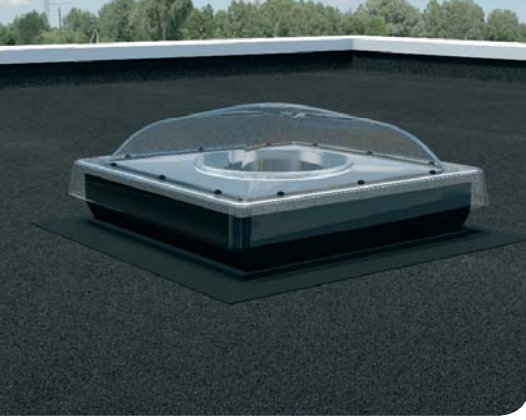


ACCESSORIES FOR LIGHT TUNNELS

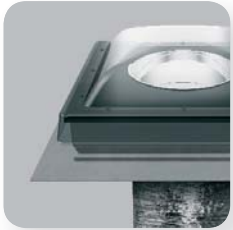
light tunnel diameter [cm]	25	35	55
SRM 61 Rigid light transmitting tube extension element, standard length 61cm	£66	£82	£108
SRK Elbow	£84	£110	£212
SRC Hanger	£55	£55	£55
SLO Light Kit	£48	£48	£50



▶ FLAT ROOF LIGHT TUNNELS

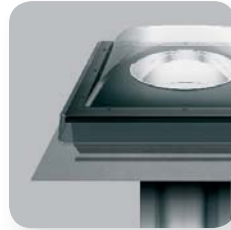


- Flat roof light tunnels make it possible to illuminate all rooms under flat roofs with natural light.
- A great addition due to its design of the type C flat roof window with a dome that ensures high durability and tightness.
- Installation of light tunnels allows daylight to rooms under flat roofs.
- Base of the light tunnel is filled inside with insulation material to secure excellent thermal insulation performance.
- Light tunnels are suitable for roofs with pitches from 0° – 15°.



SFF

- The light tunnel with the flexible light transmitting tube which allows the light tunnel with the flexible light transmitting tube can bypass potential structural obstacles. The tube length is 210cm.



SRF

- The light tunnel with the rigid light transmitting tube with a length of 61cm.
- The tube can be extended using a special SRM extension kit.

LIGHT TUNNELS

light tunnel diameter [cm]	35	55
tube length [cm]	210	180*
SFF	£390	£655
light tunnel diameter [cm]	35	55
tube length [cm]	61	61
SRF	£485	£752

IT IS NOT RECOMMENDED TO USE THE SLO LIGHT FITTING WITH FLAT ROOF LIGHT TUNNELS.