

GPL/GPU Top-Hung Roof Window



The top-hung window is manufactured in high quality natural pine with the option of a lacquered pine internal finish (GPL) or white polyurethane internal finish (GPU). It is suitable for installation into roof pitches between 15° and 55°. For installations between 55° and 75° special springs will be required.

Not advised for high level (out of reach) installation. The bottom edge of the window should be placed approx. 0.90 – 1.20m above the floor for ease of operation.

GPL

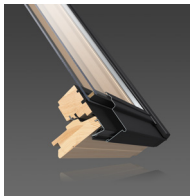


Features/Benefits

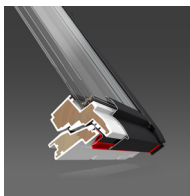
- Ventilation bar with dust and insect filter – *Allows fresh air to enter the room while the window is securely closed*
- Sash rotates 180° from inside – *Allows easy and convenient cleaning*
- Barrel bolt – *Allows the window to be locked in to position at 180° for secure cleaning of the exterior pane internally*

Operation

The sash which is top-hung is opened and closed using the bottom handle and can remain open in any position up to 45°. To watch an illustration of how the window operates, [click here](#).



GPU



Glazing options

- (--34) glazing Double glazed, laminated opaque inner pane, toughened outer pane.
- (--50) glazing Double glazed, toughened outer pane.
- (--60) glazing Double glazed, laminated inner pane, toughened outer pane with Easy-to-clean coating, enhanced noise reduction.
- (--62) glazing Triple glazed, laminated inner pane, toughened outer pane with Easy-to-clean & Anti-dew coating. Provides enhanced U-value and Noise Reduction.
- (--66) glazing Triple glazed, laminated inner, toughened outer pane with Easy-to-clean & Anti-dew coating.
- (--70) glazing Double glazed, laminated inner pane, toughened outer pane.

Cladding

- NCS standard colour (Grey): S 7500-N nearest RAL standard colour: 7043.
- Also available: titanium zinc, copper or other cladding types and colours.

Maintenance

The pane should be cleaned with a soft, clean, lint-free cloth or non-abrasive sponge. The rest of the window can be cleaned with ordinary household cleaners. The filter can be removed and either washed or replaced.

For further advice on maintenance please [click here](#).

Guarantee

- 10 year VELUX guarantee on windows and flashing kits.
 - 3 year guarantee on blinds, shutters, awnings and electrics.
- [Click here](#) for further information regarding the VELUX guarantee.

Interior finish option

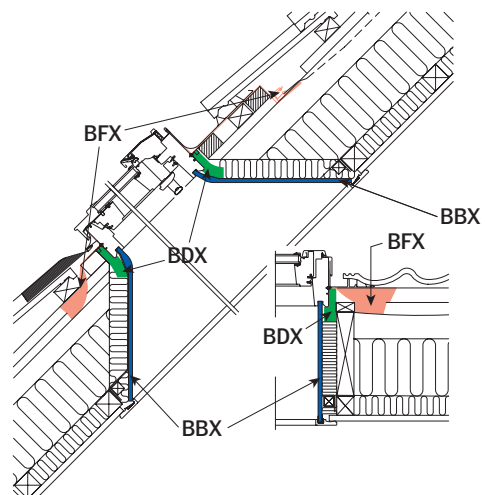
GPL

- White paint finish.

GPU

- No other finish available.

Best practice installation



Installation Products recommended by VELUX

Flashings for

- Single installation (ED_)
- Twin installation (EB_)
- Combi installation (EK_)

[Click here](#) for information on flashings.

Installation Products

- Insulation Collar (BDX)
- Underfelt Collar (BFX) includes transverse drainage gutter
- Vapour Barrier (BBX)

[Click here](#) for information on installation products.

Blinds, Awnings/Shutters

Interior Sunscreening

- Blackout Blind – Manual (DKL)
- Roller Blind – Manual (RFL)
- Flying Pleated Blind – Manual (FHL)
- Venetian Blind – Manual (PAL)
- Duo Blackout Blind – Manual (DFD)

Awnings/Shutters

- Awning Blind – Manual (MAL)
- Roller Shutters – Manual (SHL)

Additional Accessories

- Insect screen – Manual (ZIL)

[Click here](#) for information on blinds.

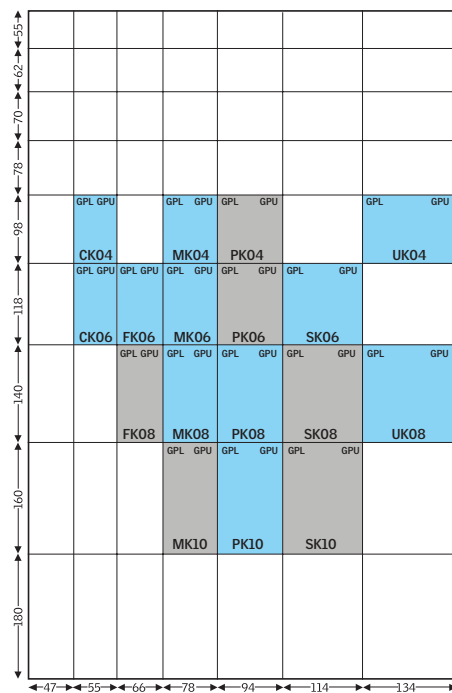
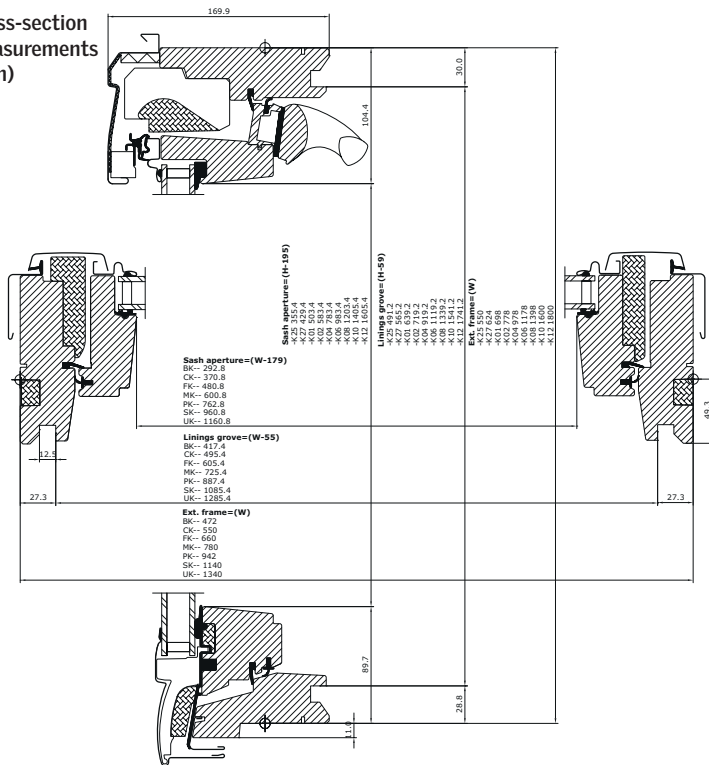
Technical data – GPL/GPU

Please note not all glazing variants are available in all sizes and types

Size	Window Options	Exterior Frame	Visible Glass	Lining Rebate
		WxH	exf	kxl
CK04	GPL, GPU	550 x 978	371 x 783	495 x 919
CK06	GPL, GPU	550 x 1178	371 x 983	495 x 1119
FK06	GPL, GPU	660 x 1178	481 x 983	605 x 1119
FK08	GPL, GPU	660 x 1398	481 x 1203	605 x 1339
MK04	GPL, GPU	780 x 978	601 x 783	725 x 919
MK06	GPL, GPU	780 x 1178	601 x 983	725 x 1119
MK08	GPL, GPU	780 x 1398	601 x 1203	725 x 1339
MK10	GPL, GPU	780 x 1600	601 x 1405	725 x 1541
PK04	GPL, GPU	942 x 978	763 x 783	887 x 919

Size	Window Options	Exterior Frame	Visible Glass	Lining Rebate
		WxH	exf	kxl
PK06	GPL, GPU	942 x 1178	783 x 983	887 x 1119
PK08	GPL, GPU	942 x 1398	763 x 1203	887 x 1339
PK10	GPL, GPU	942 x 1600	763 x 1405	887 x 1541
SK06	GPL, GPU	1140 x 1178	961 x 983	1085 x 1119
SK08	GPL, GPU	1140 x 1398	961 x 1203	1085 x 1339
SK10	GPL, GPU	1140 x 1600	961 x 1405	1085 x 1541
UK04	GPL	1340 x 978	1161 x 783	1285 x 919
UK08	GPL, GPU	1340 x 1398	1161 x 1203	1285 x 1339

Cross-section measurements (mm)



Technical data (GPL/GPU)	Size	CK04	CK06	FK06	FK08	MK04	MK06	MK08	MK10	PK04
Ventilation flap – free area [10 ³ mm ²]*		2.8	2.8	3.7	3.7	4.5	4.5	4.5	4.5	6.1
Ventilation flap – equivalent area [10 ³ mm ²]*		2.6	2.6	3.1	3.1	3.7	3.7	3.7	3.7	4.6
Ventilation – open window manual [m ²]*		0.39	0.48	0.60	0.72	0.58	0.72	0.87	1.01	0.72
Effective daylight area [m ²]		0.29	0.37	0.47	0.58	0.47	0.59	0.72	0.85	0.60

*Measured to EN 13141-1

Technical data (GPL/GPU)	Size	PK06	PK08	PK10	SK06	SK08	SK10	UK04	UK08
Ventilation flap – free area [10 ³ mm ²]*		6.1	6.1	6.1	7.2	7.2	7.2	10.6	10.6
Ventilation flap – equivalent area [10 ³ mm ²]*		4.6	4.6	4.6	5.6	5.6	5.6	6.6	6.6
Ventilation – open window manual [m ²]*		0.89	1.08	1.25	1.09	1.32	1.54	1.05	1.58
Effective daylight area [m ²]		0.75	0.91	1.07	0.95	1.14	1.35	0.91	1.41

*Measured to EN 13141-1

Pane variant		--34	--50	--60	GPU --62	--66	--70	EN/ISO Standard
Thermal transmittance, U _w [W/m ² K]		1.2	1.3	1.2	0.85	1.0	1.3	EN ISO 12567-2
Thermal transmittance, U _g [W/m ² K]		1.0	1.1	1.0	0.5	0.7	1.1	EN 673
Sound insulation, R _w [dB]		35	32	37	42	37	35	EN ISO 10140-2
Air permeability		Class 4	Class 4	Class 4	Class 4	Class 4	Class 4	EN 1026
Light transmittance, τ _v		0.53	0.80	0.61	0.65	0.69	0.79	EN 410
Total solar energy transmittance, g		0.50	0.66	0.30	0.50	0.50	0.64	EN 410